



HOUSE & LAND

Island View Estate
San Remo



LOT 203 MOONDARA DRIVE SAN REMO

Build your dream home on this large plot of 624 m² within easy walking distance to the main street of San Remo.

This house and land package will provide you with beautiful views of Westernport Bay and is only minutes from the back beach as well.



Land Size: 624 m²
House Size 254.19 m²

Contact Us

- Cape Paterson Road, Wonthaggi VIC 3995
- Phone: 03 5672 1999
- Email reception@coldonhomes.com.au
- Open 7 days a week (excl. public holidays)
- Mon to Fri – 8:00am to 5:00pm
- Sat & Sun – 1:00pm to 4:00pm

Lakeview

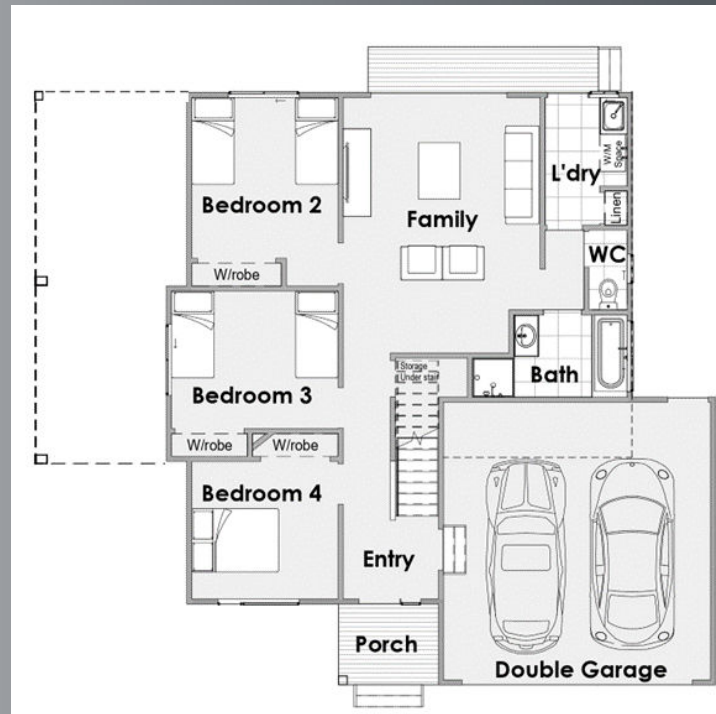
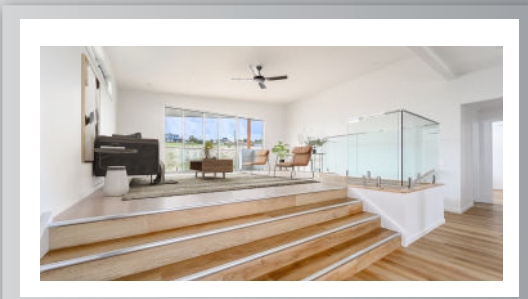
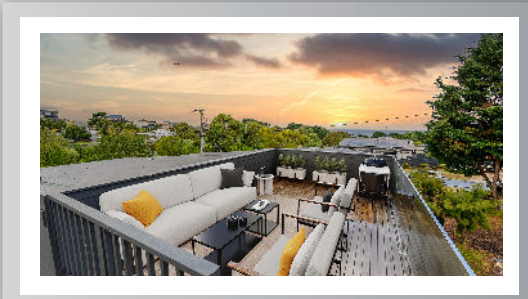
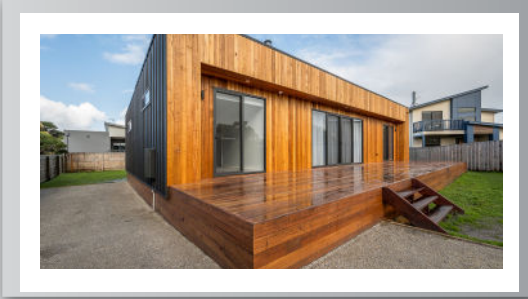
The Lakeview features an open plan kitchen, family and meals area, with a huge deck stretching the entire length of the rear of the home. This rear deck is partially covered to enable year-round use and the considered layout creates a day-to-day living zone that cannot be faulted.

The master bedroom is on the top level with a walk-in-robe, extra built-in storage and an ensuite which round out the features to create the perfect retreat from the rest of the house.

Three more bedrooms are located downstairs with a central family room that has direct access to the backyard. A family bathroom, large laundry and double garage with direct access complete the offering.

PACKAGE INCLUSIONS

- Floor coverings throughout
- Stainless steel appliances
- Large rear verandah
- 4 bedrooms all with built in robes
- Colorbond steel roofing
- Ensuite to master bedroom
- Driveway & paths
- Split system heating / cooling
- Stone Benchtops to the Kitchen



Price From
\$1,005,000

Coldon Homes has taken care in preparing this information. All sizes and locations of lots and prices may change. Prices may also vary depending on site costs, inclusions and client requirements. Packages do not include stamp duty costs or legal fees. Unless specified prices do not include fencing, paths, furnishings and window furnishings. Floor coverings are included throughout. For further information, please contact our friendly Sales Consultants. Photography and illustrations should be used as a guide only. House and land packages, are only offered for the stated lot and home advertised and is only available until sold. House and land bundles are subject to land availability.