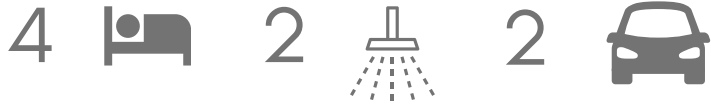
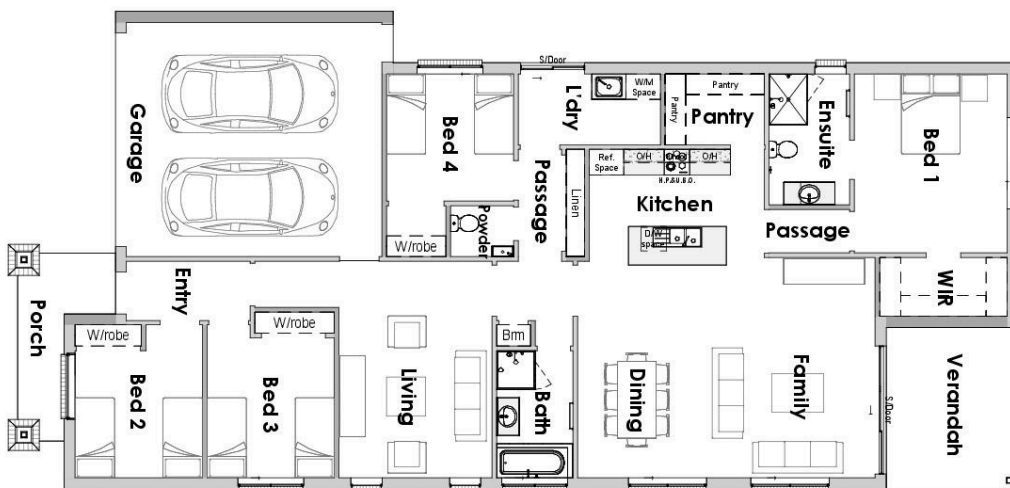


# ASHBROOK



BY COLDON HOMES



## ASHBROOK

residence area	174.8 m <sup>2</sup>
garage area	37.22 m <sup>2</sup>
verandah area	11.68 m <sup>2</sup>
porch area	7.17 m <sup>2</sup>
<b>total area</b>	<b>230.9 m<sup>2</sup></b>
	24.9 sq
<b>total width</b>	<b>11.2 m</b>
<b>total length</b>	<b>22.4 m</b>

**OVER 55 YEARS OF  
EXPERIENCE FOR THE  
FINEST QUALITY HOMES**

Cape Paterson Road  
Wonthaggi VIC 3995  
Ph (03) 5672 1999  
[www.coldonhomes.com.au](http://www.coldonhomes.com.au)

Lipska Pty Ltd  
ACN 005 530 370  
Trading as COLDON HOMES  
ABN 43 863 857 070

