

# CASPER MODERN

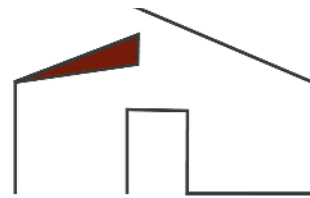
3



2

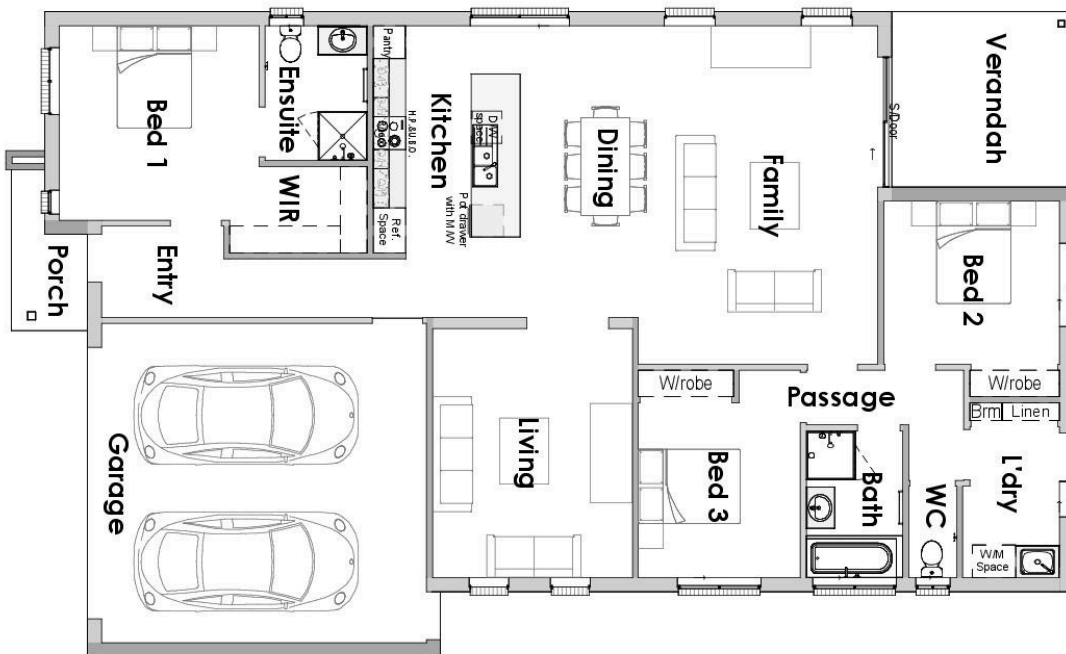


2



PREMIER **RANGE**

BY COLDON HOMES



## CASPER MODERN

residence area	155 m <sup>2</sup>
garage area	39 m <sup>2</sup>
verandah area	10.78 m <sup>2</sup>
porch area	3.7 m <sup>2</sup>
total area	208.48 m <sup>2</sup>
	22.5 sq
total width	11.88 m
total length	19.65 m

**OVER 55 YEARS OF  
EXPERIENCE FOR THE  
FINEST QUALITY HOMES**

Cape Paterson Road  
Wonthaggi VIC 3995  
Ph (03) 5672 1999  
[www.coldonhomes.com.au](http://www.coldonhomes.com.au)

Lipska Pty Ltd  
ACN 005 530 370  
Trading as COLDON HOMES  
ABN 43 863 857 070

